

## Cyclus2 Firmware Update

Description for control devices from serial number XXXX-10020-00256 to XXXX-10020-00347.

The control- and analysis software of the Cyclus2 is being continuously further developed. In this we closely collaborate with our clients and co-operation partners. The up-to-date versions are usually sent to you in form of a ZIP folder via e-mail. This document describes the update process with these data on the Cyclus2.

1. Unzip the files retaining the given directory structure and transfer the data onto your USB stick. Important notice: Not alls USB sticks are compatible with the Cyclus2! We therefore strongly recommend using only the USB stick that comes with the Cyclus2.
2. After copying the data there should be the folder *C2AppManager* on the USB stick. See figure 1: In this example the data were transferred onto a USB stick named Kingston, drive G:

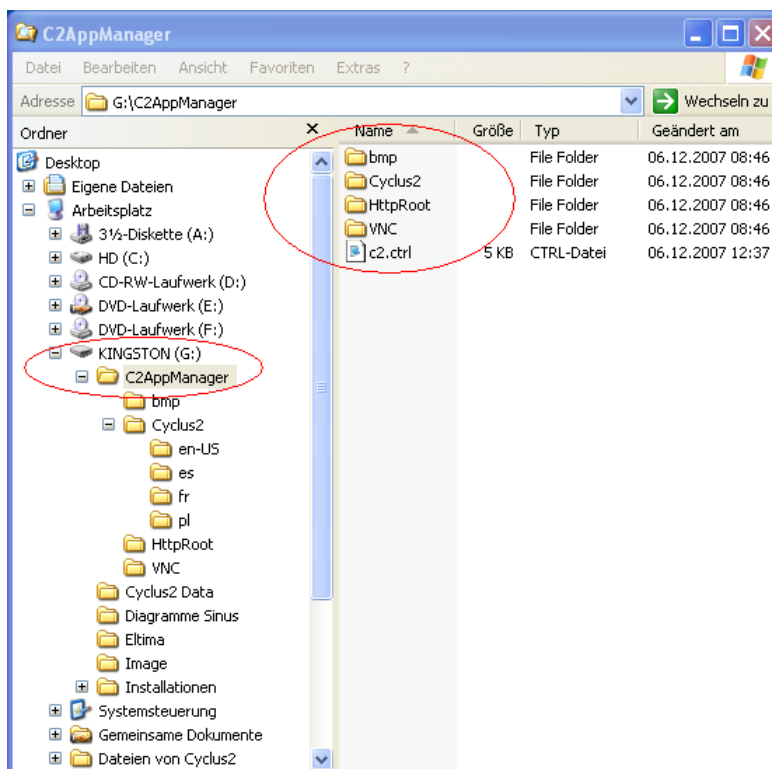


Figure 1: USB stick directory structure for update Cyclus2 Firmware

3. Switch off the Cyclus2.
4. Connect the USB stick with the update to your Cyclus2.
5. Switch on the Cyclus2. During the start-up the data are automatically transferred from the USB stick to the Cyclus2. Important notice: The Cyclus2 must not be switched off during this process!
6. On completing the update please check the version number of the Cyclus2 firmware. In order to do so the dialogue *Information* and then the menu item *System* must be opened (see figure2).

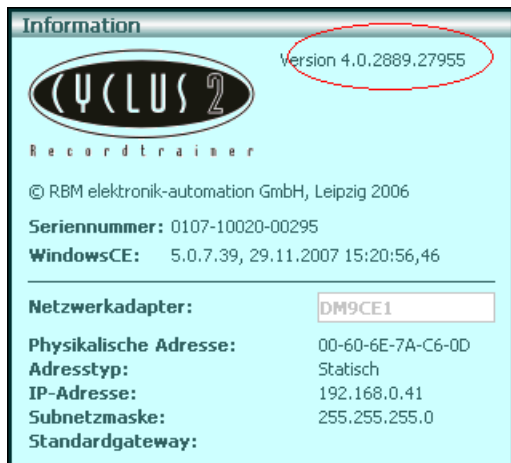


Figure 2: Dialogue Information with version

Sollten Sie Probleme mit dem Update haben, dann kontaktieren Sie bitte die Firma RBM. Unsere Rufnummer ist +49 (0)341 47 83 95 00. Für eine Fehlerdiagnose benötigen wir Informationen die auf Ihrem USB-Stick gespeichert sind.

If you should encounter problems with the update, please contact the RBM support (Phone: +49 (0)341 47 83 95 00). For any troubleshooting we require the information stored on your USB stick.