

Cyclus2 Firmware Update

Description for control units with serial number XXXX-10020-00348 and higher

The control- and analysis software of the Cyclus2 is continuously being further developed. In this we closely collaborate with our clients and co-operation partners. The download of the current version is available as Zip archive in the [Service](#) section on our website.

1. Transfer the file *update.c2img* from the archive to the root directory of the USB stick. See figure 1: In the example the file was transferred to a USB stick named *Kingston*, showing as *drive K:*.

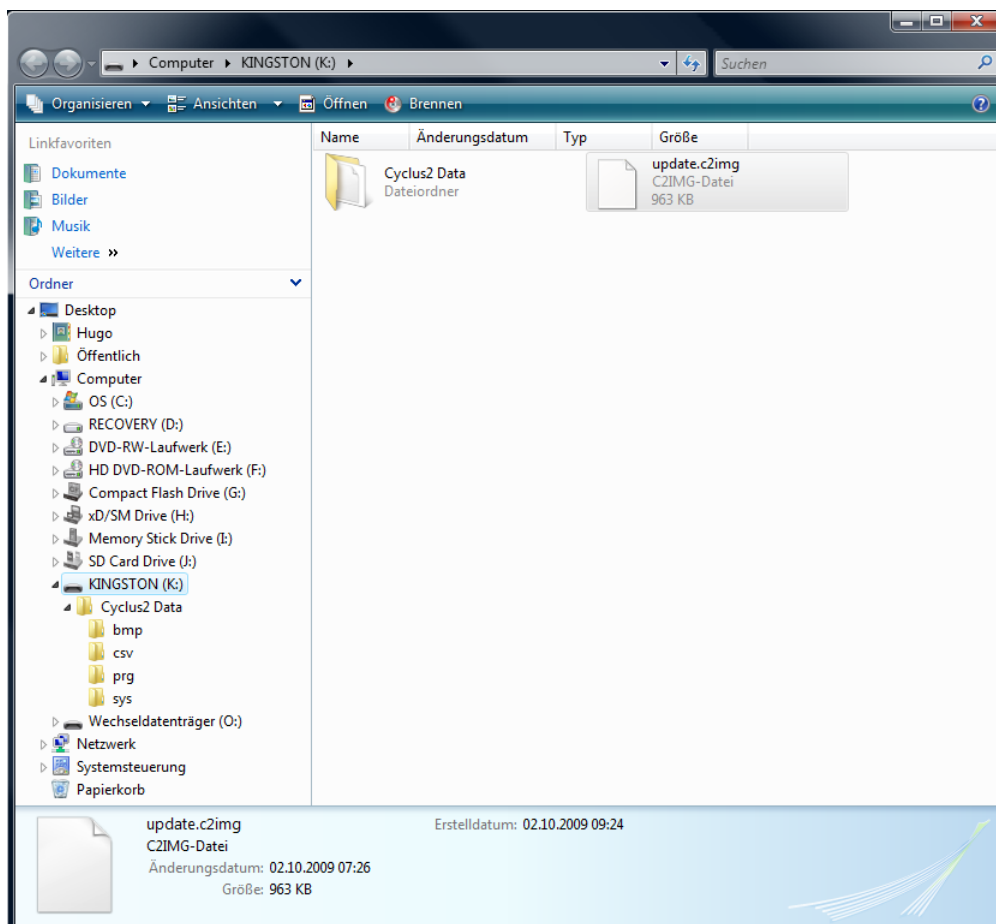


Figure 1: USB stick with update file *update.c2img*

2. Connect the USB stick with the update to the running Cyclus2.
3. The Cyclus2 recognises the new version, transfers it to the internal cache memory and informs the user with a pop-up dialogue (see figure 2). Press the ok button to install the update now, or esc to cancel the installation. The update will then take place on the next system restart.

The update process after restarting might take some time depending on the volume. During this process the Cyclus2 must not be switched off! Switching off the device during the update after restarting may cause damage to the Cyclus2 making it subject to repair at our company.

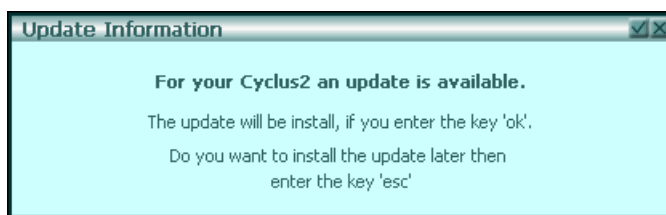


Figure 2: Update information

4. Finally check the version number of the Cyclus2 firmware. In order to do so the menu item *Sytem* in the *Information* dialogue must be opened (see figure 3).

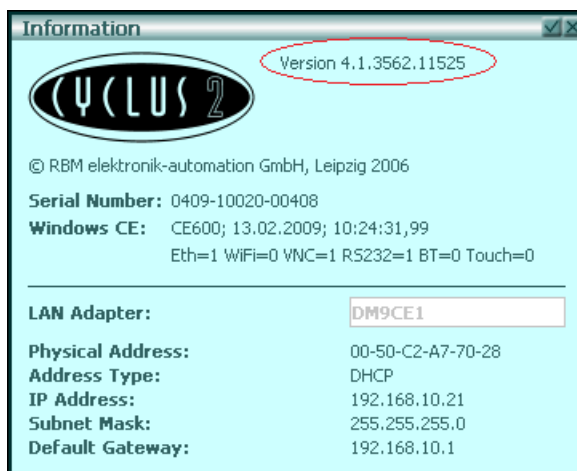


Figure 3: Dialogue Information with version number

5. Once you have successfully updated the Cyclus2 we recommend deleting the file *update.c2img* from your USB stick.

If you have any queries regarding the update process or in case the update process fails please contact the RBM support team (Phone: +49 (0)341 47 83 95 00)

For any troubleshooting we require the information from the *Cyclus2Update.log* file, which will automatically be stored on your USB stick.